

Takesada MATSUTANI & Yukio FUJIMOTO

Sat. November, 14 - Fri. December, 25, 2020

We are delighted to hold a two-person show of Takesada MATSUTANI and Yukio FUJIMOTO, both of whom are energetically working around the world while maintaining a deep connection with the Kansai region in Japan.

MATSUTANI has been displaying a new potential of painting by generating organic and sensual forms and textures with vinyl adhesive, a new material developed soon after WWII, and black graphite layered on top. His works have been receiving high evaluations from around the world, including at his 2019 exhibition at the Centre Pompidou in Paris.



Takesada MATSUTANI
Cercle 2000-1, 2000, vinyl relief,
graphite pencil on canvas, 291 x 197
cm

Fujimoto has created performances and installations with electronic devices since the 1970s. Under the consistent theme of 'sound', he calls for our active engagement and keen awareness to make his works complete. This concept has drawn critical international acclaim, including at his participation at the Venice Biennale twice.

This exhibition will illuminate the unique concepts and ways of expressions of the two artists. Examining both artists through the keyword of 'rhythm' allows us to discover a new resonance between them; the dynamic rhythm in MATSUTANI's work generated by strokes of

graphite and the movement of adhesive can be synchronized with the audial rhythm of Fujimoto's works. The surprising harmony of these two leading artists

from Japan will give us an opportunity to examine their concepts and activities together.



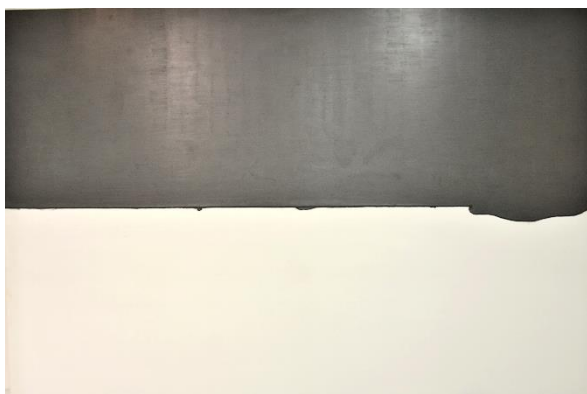
Yukio FUJIMOTO
top072018, 2018, photogram
18.5 x 24.7 cm

Takesada MATSUTANI

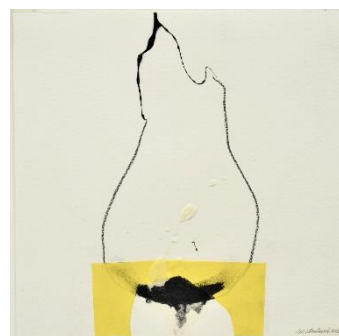
Takesada MATSUTANI (b.1937) is an Osaka-born, Paris-based artist and one of the most important Japanese artists working today. From the early sixties to the early seventies, he was a key member of the 'second generation' of the Gutai Art Association (1954 – 1972), Japan's innovative and influential art collective of the post-war era.

Yukio FUJIMOTO

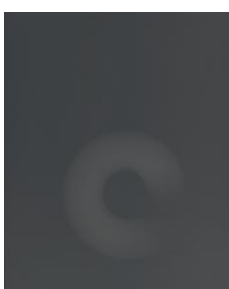
Born in Nagoya in 1950, based in Kobe, Japan. FUJIMOTO has created numerous artworks that arouse our senses through "sound objects," which convert "sound" into "form." His artworks engulf the exhibition space as well as the viewers by allowing their senses to discover new means of recognition, which is a common denominator for Fujimoto's art.



Takesada MATSUTANI, *Straight Line-2000*, 2000, Vinyl relief, graphite pencil on canvas, 197 × 291cm



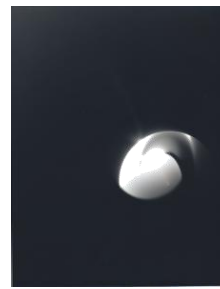
Takesada MATSUTANI, *A Gate-1*, 2020, Vinyl adhesive graphite pencil, paper collage on paper, 23.7 × 24.2 cm



Yukio FUJIMOTO, *top332018*, 2018, photogram, 19.49 × 24.55 cm



Yukio FUJIMOTO, *top142018*, 2018, photogram, 19.98 × 24.4 cm



Yukio FUJIMOTO, *top012018*, 2018, photogram, 20.3 × 25.4 cm

Exhibition date	Sat. 14 November 2020 – Fri. 25 December 2020
Closed	Sunday and Monday
Gallery opening hours	11:00 - 13:00 / 14:00 - 19:00
	★ We will be hosting a Closing Party
	Date and time : <u>19 December 16 : 00 - 18 : 00</u>
	Both artists Takesada Matsutani and Yukio Fujimoto will be attending
Address	〒 650-0022 Kobe-shi Motomachidori 3-9-5-2F
Contact	TEL: 078-391-1666 FAX : 078-391-1667 MAIL: info@gyfa.co.jp
Access	JR ・ Hanshin Motomachi Station 1 minute walk from West Exit
Free entrance	

※Please be advised that opening hours are subject to change in accordance to the government's COVID-19 guidelines

Press enquiries TEL: +81(0)78 391 1666 MAIL : info@gyfa.co.jp Contact: Nakano